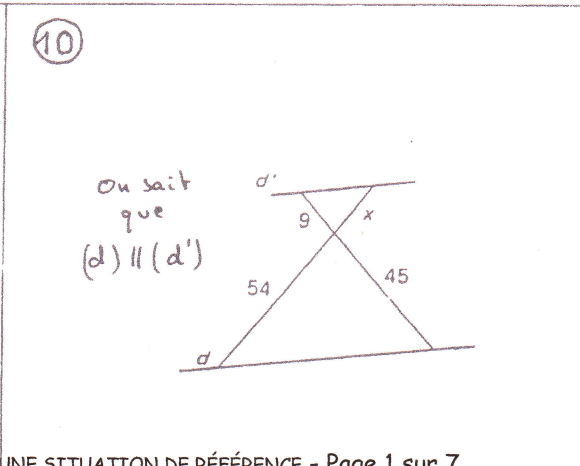
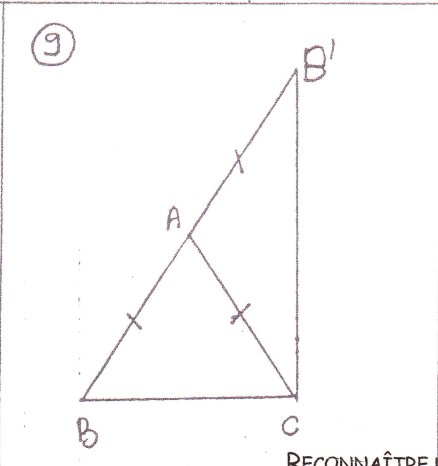
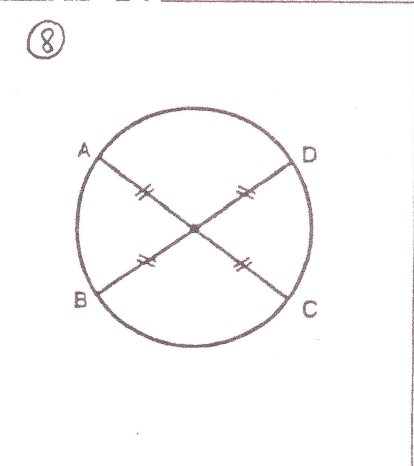
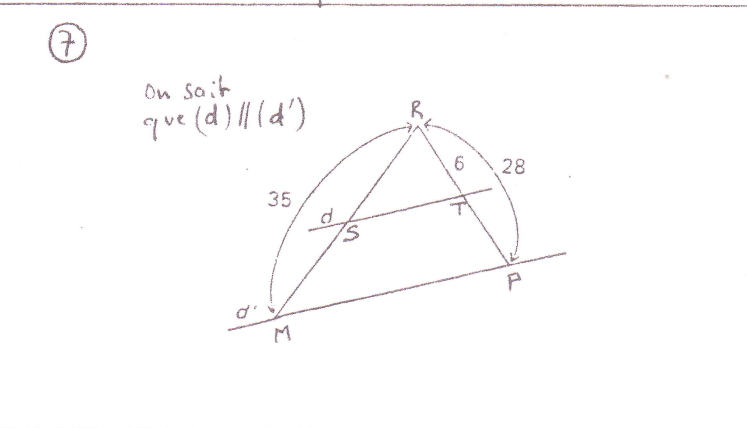
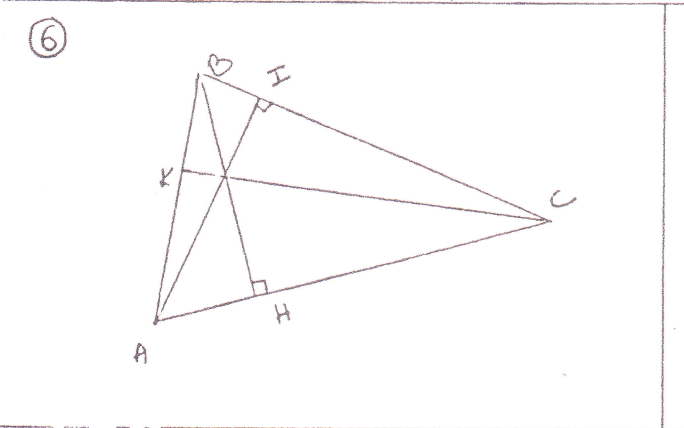
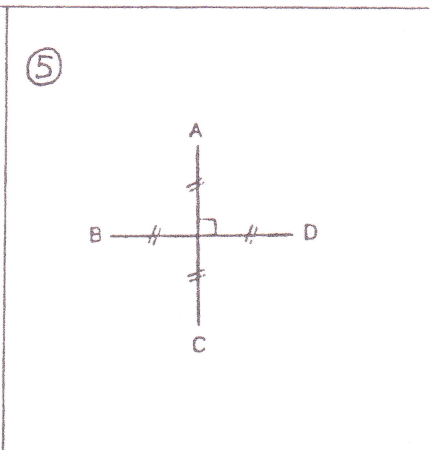
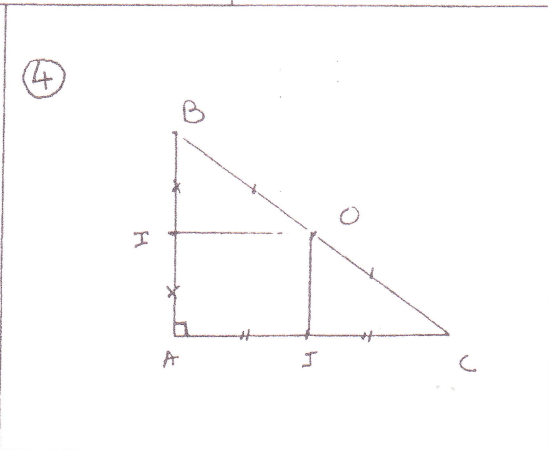
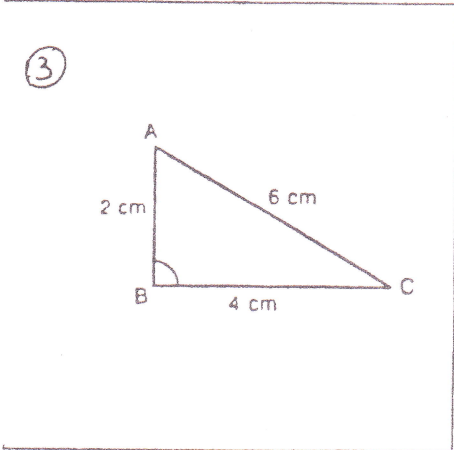
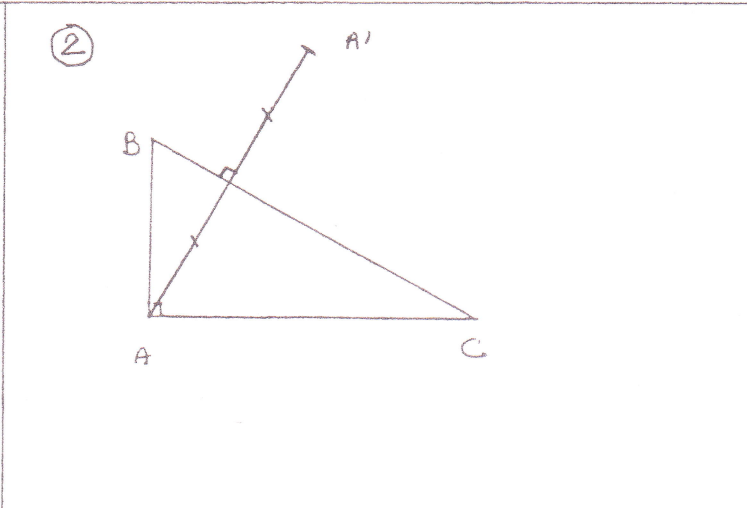
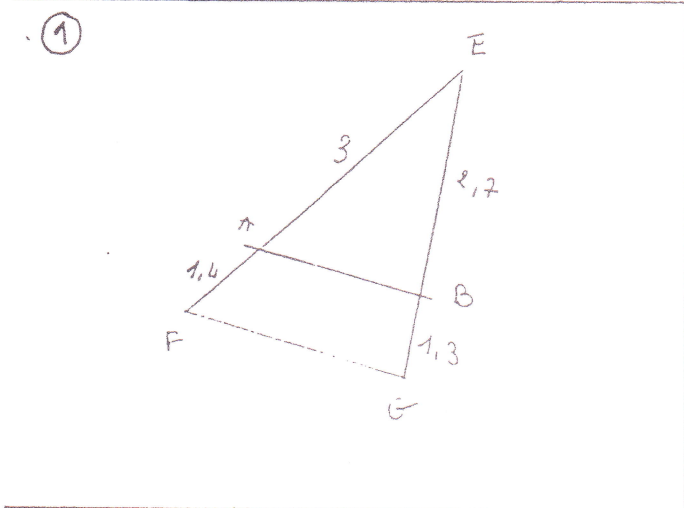


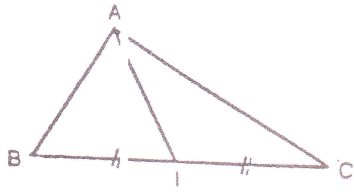
RECONNAITRE DES SITUATIONS DE REFERENCE

(doc 7)



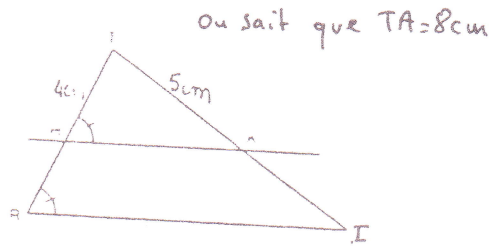
RECONNAITRE DES SITUATIONS DE REFERENCE

11

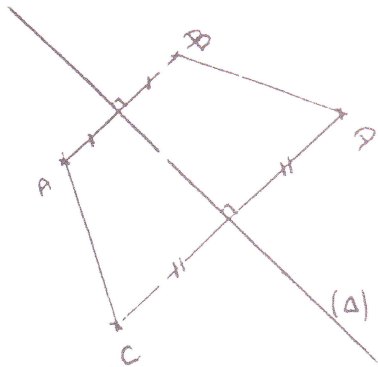


AI = 7 m BC = 12 cm

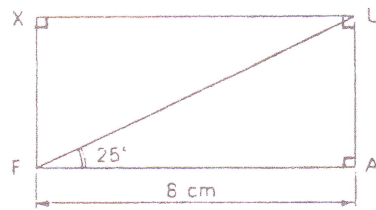
12



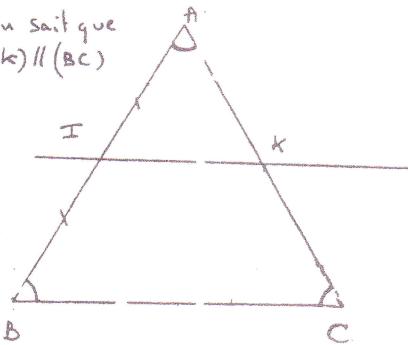
13



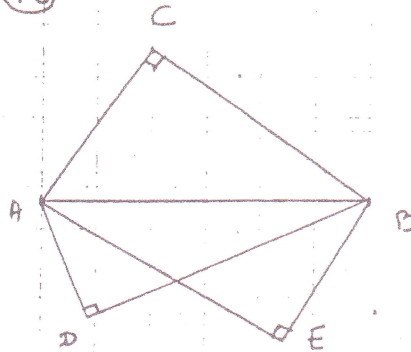
14



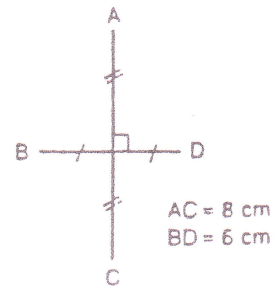
15 ou sait que
(IK) // (BC)



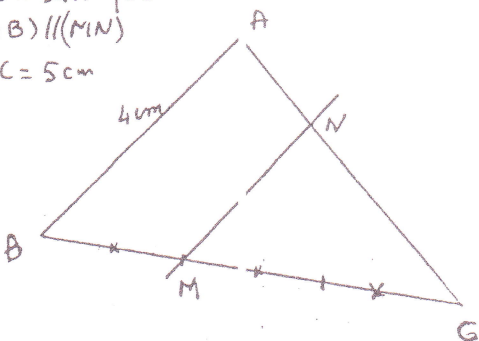
16



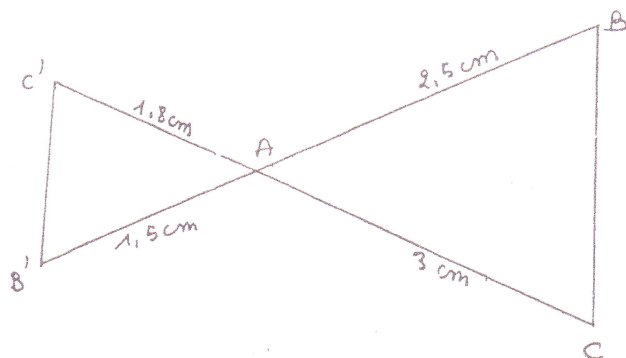
17



18 ou sait que
(AB) // (MN)
AC = 5 cm

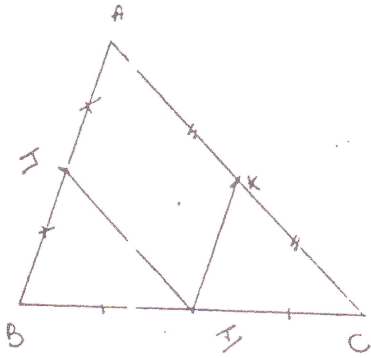


19

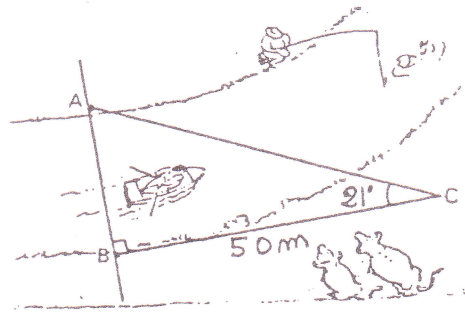


RECONNAITRE DES SITUATIONS DE REFERENCE

20

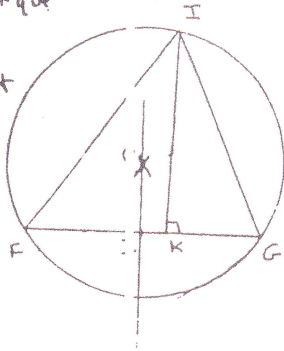


21

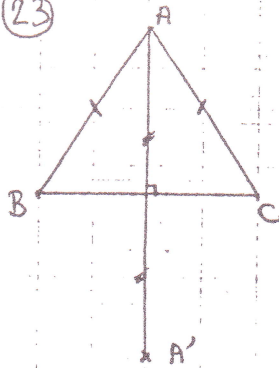


22

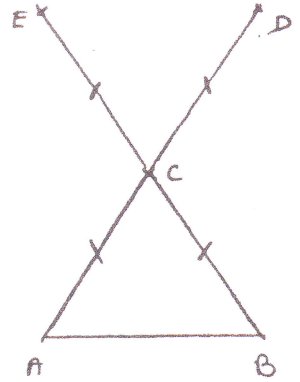
On sait que
I est le
milieu
de segment
[FG]



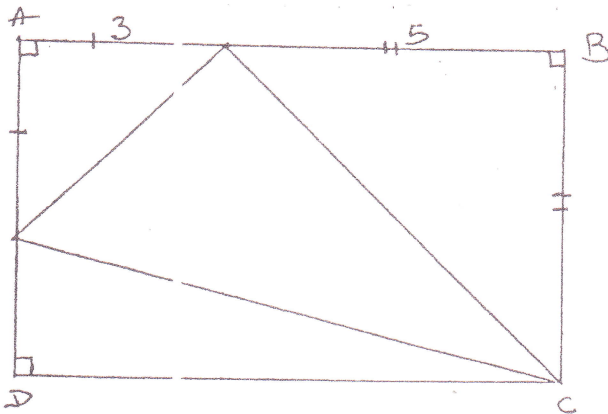
23



24

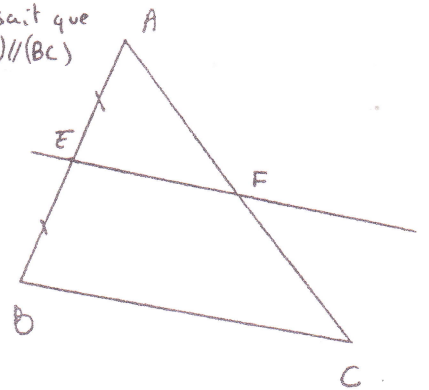


25

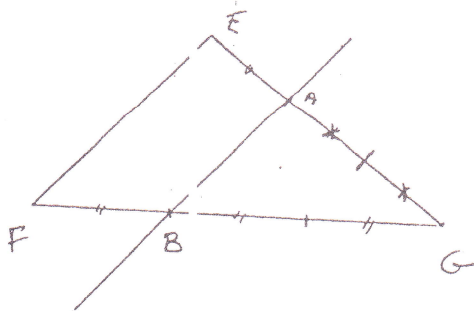


26

On sait que
(EF) // (BC)

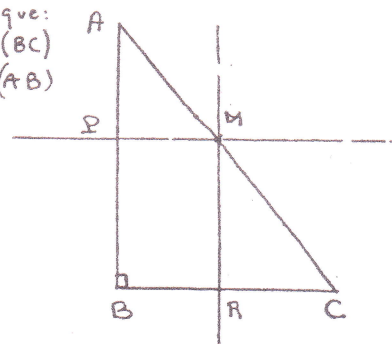


27



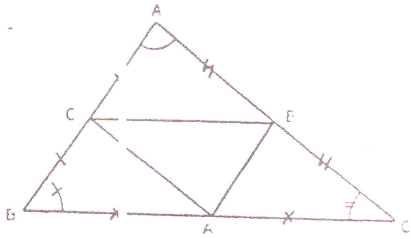
28

On sait que:
(MP) // (BC)
(MR) // (AB)



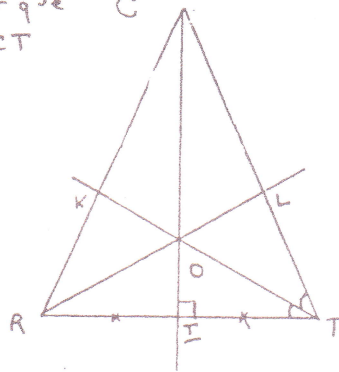
RECONNAITRE DES SITUATIONS DE REFERENCE

29

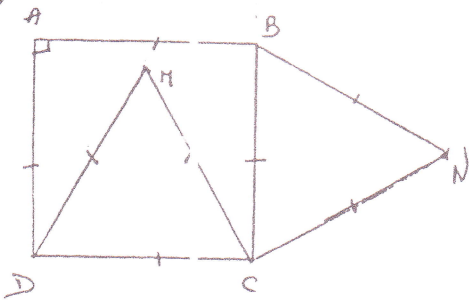


30

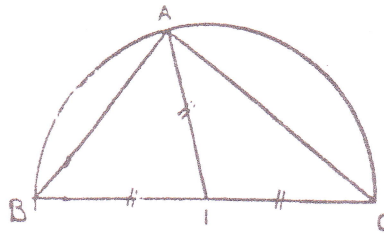
on sait que
 $CR = CT$



31

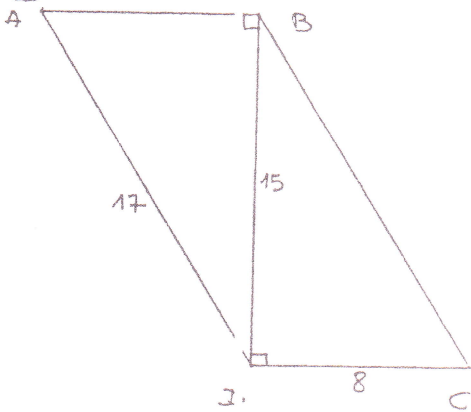


32

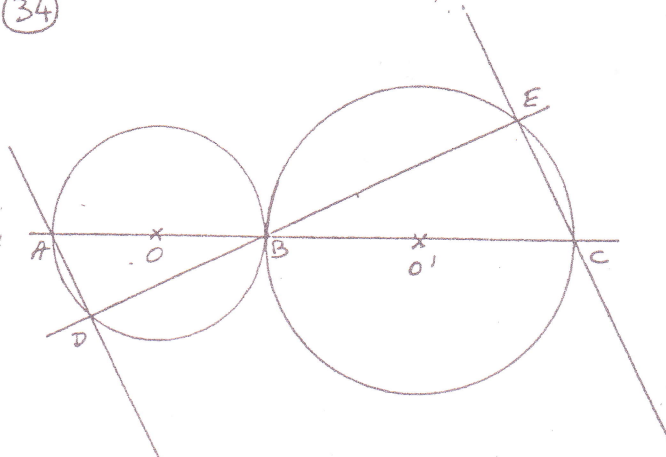


$AI = 7.5 \text{ cm}$ $AB = 9 \text{ cm}$

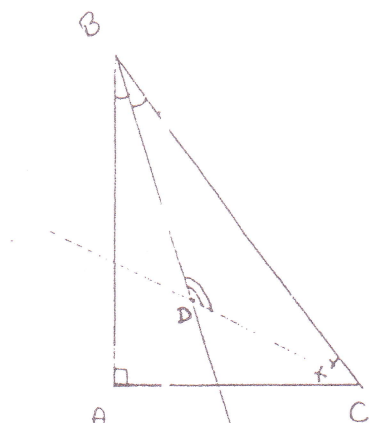
33



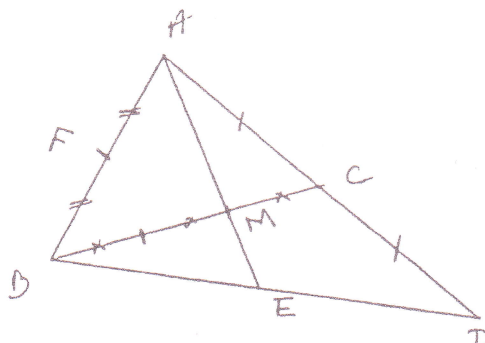
34



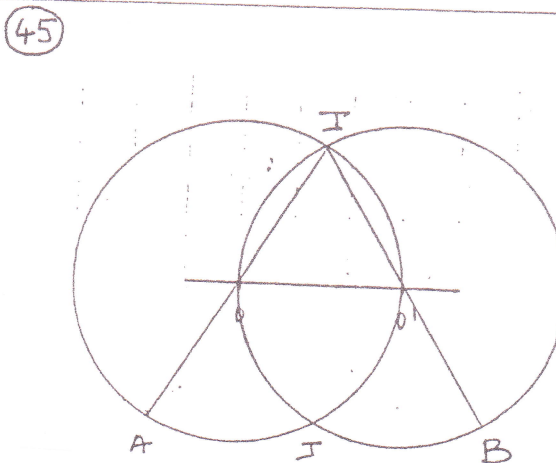
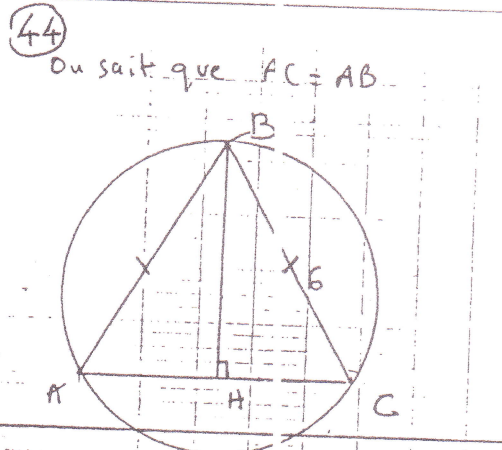
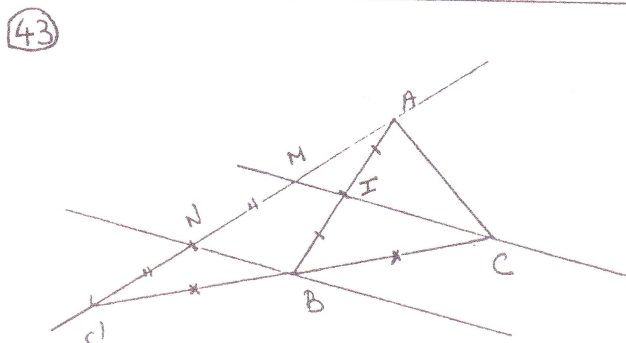
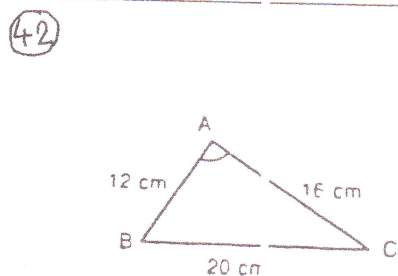
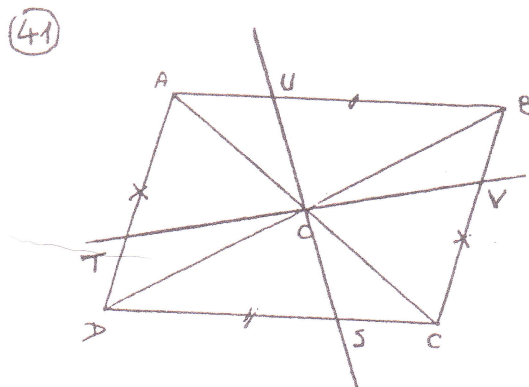
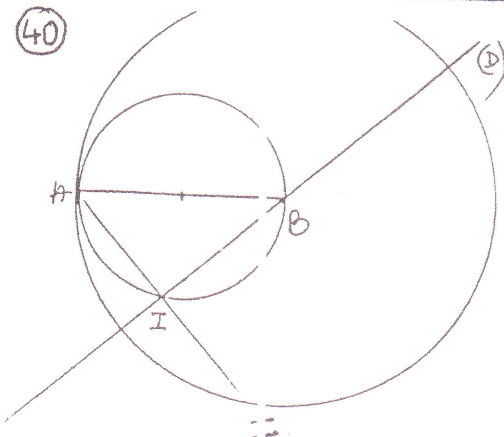
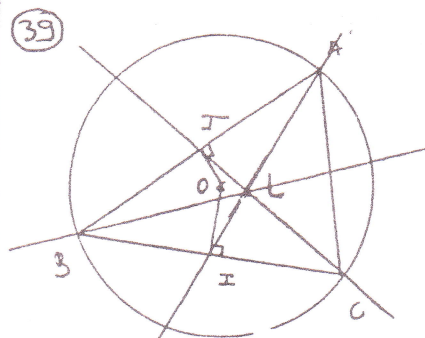
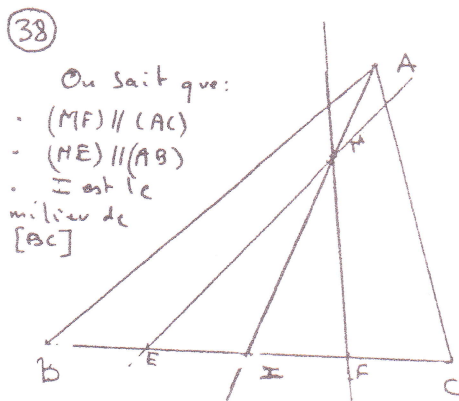
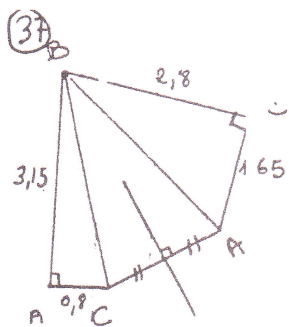
35



36

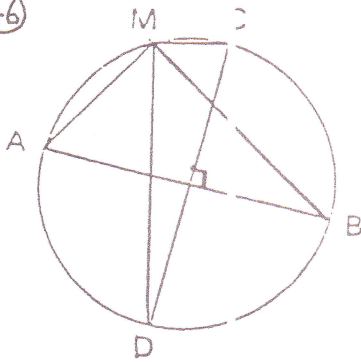


RECONNAITRE DES SITUATIONS DE REFERENCE

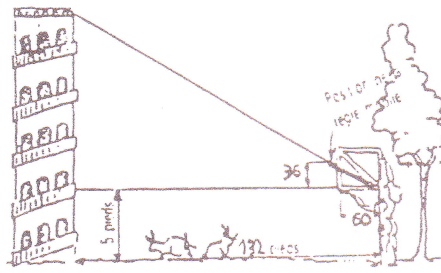


RECONNAITRE DES SITUATIONS DE REFERENCE

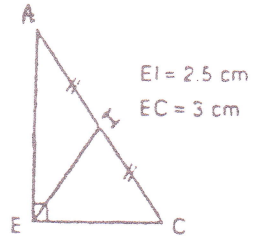
46



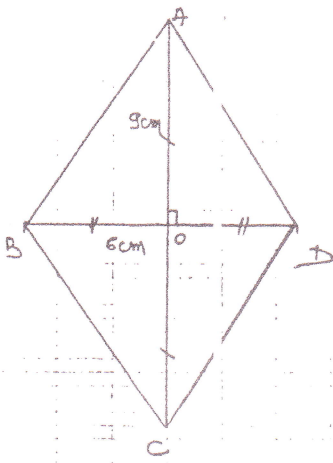
47



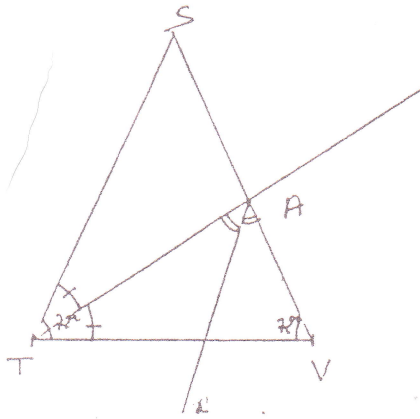
48



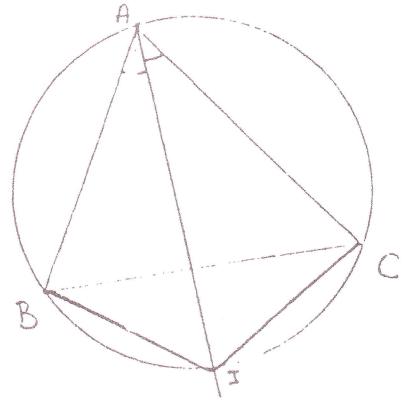
49



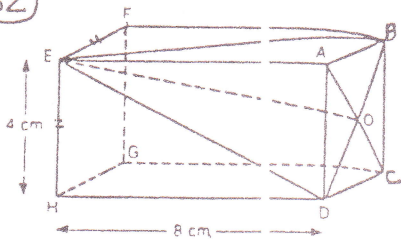
50



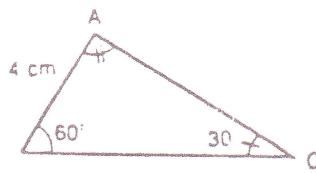
51



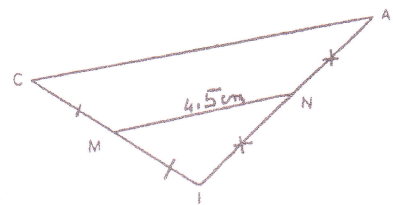
52



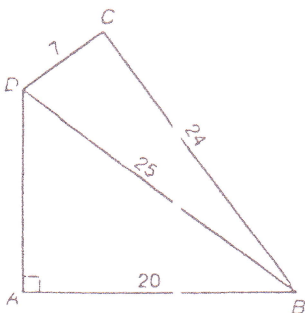
53



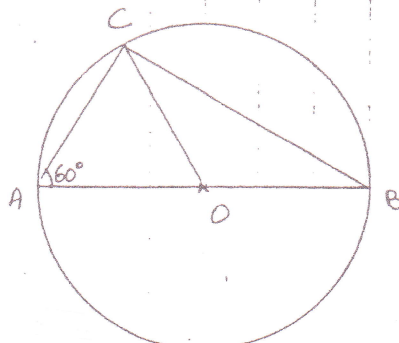
54



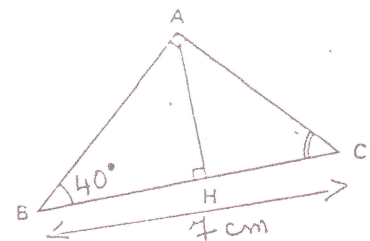
55



56

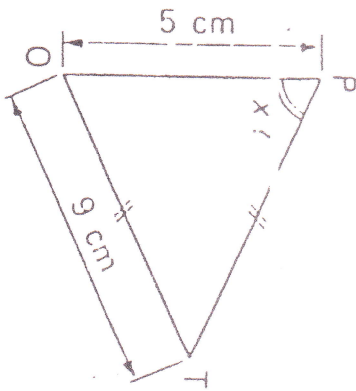


57

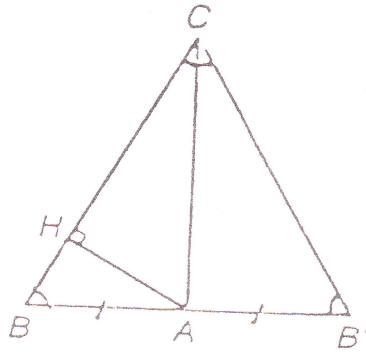


RECONNAITRE DES SITUATIONS DE REFERENCE

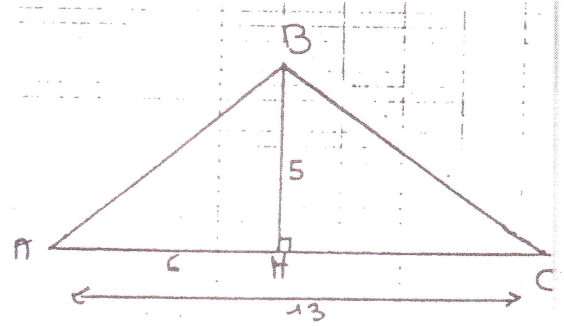
58



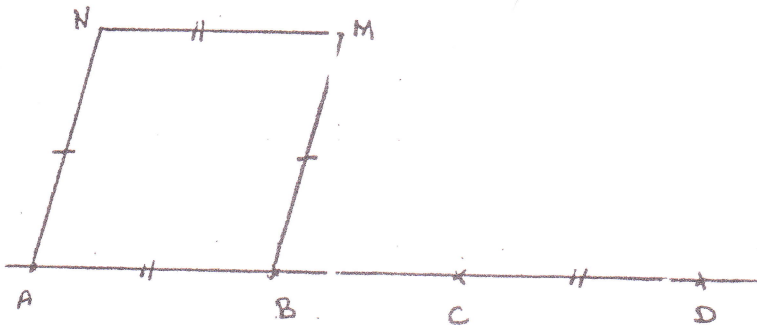
59



60



61



62

